

## Integrity

### Metal Seating Collection

When ordering this product, specification codes must be added to unit Model Number, as shown below.

NOTE: Upholstery and/or additional options must be specified separately.



MODEL  
NUMBER -

METAL FRAME  
FINISH -

POLYURETHANE  
ARM COLOR -

**NTG110-WA-S      -PB**

**GM** Gunmetal      **PB** Black

**MB** Metallic Beige      **PG** Grey

**SB** Smooth Black      **PT** Taupe

**SS** Smooth Silver

**TB** Textured Black

**TN** Textured Nickel

Integrity

## Integrity

### Metal Seating Collection

Different fabrics may be specified on the seat and on the back. In this case, use the higher grade of the two. No additional upcharge applies. All prices are in CA dollars (CAD).

### NTG100-AL

#### DESCRIPTION –

Guest Chair, armless



#### DIMENSIONS –

Width	24
Depth	27
Height	35
Seat Width	21
Seat Depth	19.5
Seat Height	19
COM Yard Back	1
COM Yard Seat	0.75
Cubic Feet	14
Ship Weight	33

#### OPTIONS –

Moisture barrier, <i>per seat</i>	+85
Wallsaver rear leg	+65
Ganging bracket (1 per 2 chairs)	+50
Adjustable glides	+50



ADJUSTABLE  
GLIDES

*\*\*Front adjustment only on wall saver models.*

MODEL NO.	COM/1	2	3	4	5	6	7	8
NTG100-AL	1087	1228	1360	1498	1641	1782	1928	2079

### NTG110-WA

#### DESCRIPTION –

Guest Chair, arms

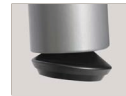


#### DIMENSIONS –

Width	24
Depth	27
Height	35
Seat Width	21
Seat Depth	19.5
Seat Height	19
Arm Height	25.5
COM Yard Back	1.25
COM Yard Seat	0.75
Cubic Feet	14
Ship Weight	38

#### OPTIONS –

Moisture barrier, <i>per seat</i>	+85
Wallsaver rear leg	+65
Ganging bracket (1 per 2 chairs)	+50
Adjustable glides	+50



ADJUSTABLE  
GLIDES

*\*\*Front adjustment only on wall saver models.*

MODEL NO.	COM/1	2	3	4	5	6	7	8
NTG110-WA	1176	1320	1454	1595	1740	1890	2042	2197

Integrity

## Integrity

### Metal Seating Collection

Different fabrics may be specified on the seat and on the back. In this case, use the higher grade of the two. No additional upcharge applies. All prices are in CA dollars (CAD).

### NTH130

#### DESCRIPTION –

Hip Chair



#### DIMENSIONS –

Width 24	_____
Depth 27	_____
Height 41	_____
Seat Width 21	_____
Seat Depth 21	_____
Seat Height 24.5	_____
Arm Height 34	_____
COM Yard Back 1	_____
COM Yard Seat 0.75	_____
Cubic Feet 18	_____
Ship Weight 42	_____

#### OPTIONS –

Moisture barrier, <i>per seat</i>	+85
Adjustable glides	+50



ADJUSTABLE  
GLIDES

MODEL NO.	COM/1	2	3	4	5	6	7	8
NTH130	1988	2148	2297	2446	2604	2762	2924	3089

Integrity

## Integrity Highback

Patient Seating Collection

Different fabrics may be specified on the seat and on the back. In this case, use the higher grade of the two. No additional upcharge applies. All prices are in CA dollars (CAD).

### NTP130

DESCRIPTION –

Highback Chair



DIMENSIONS –

Width	24.5
Depth	27
Height	45.5
Seat Width	21
Seat Depth	19.5
Seat Height	19
Arm Height	25.5
COM Yard Back	1.75
COM Yard Seat	0.75
Cubic Feet	20
Ship Weight	43

OPTIONS –

Moisture barrier, <i>per seat</i>	+85
Wallsaver rear leg	+65
Tilt and roll casters (inc. handle)	+225
Adjustable glides	+50



ADJUSTABLE GLIDES

*\*\*Front adjustment only on wall saver models.*

MODEL NO.	COM/1	2	3	4	5	6	7	8
<b>NTP130</b>	1421	1626	1822	2027	2238	2455	2677	2902

### NTFR

DESCRIPTION –

Foot Rest



DIMENSIONS –

Width	18.5
Depth	14
Height	13
COM Yard	0.75
Cubic Feet	3
Ship Weight	12

OPTIONS –

Adjustable glides	+50
-------------------	-----



ADJUSTABLE GLIDES

*\*\*Front adjustment only on wall saver models.*

MODEL NO.	COM/1	2	3	4	5	6	7	8
<b>NTFR</b>	796	853	903	958	1013	1067	1126	1175

Integrity

## Integrity

### Metal Seating Collection

Different fabrics may be specified on the seat and on the back. In this case, use the higher grade of the two. No additional upcharge applies. All prices are in CA dollars (CAD).

#### NTB120-AL

DESCRIPTION –

Chair, armless



DIMENSIONS –

Width	34
Depth	27
Height	35
Seat Width	31
Seat Depth	19.5
Seat Height	19
COM Yard Back	1.75
COM Yard Seat	1.25
Cubic Feet	19
Ship Weight	42

OPTIONS –

Moisture barrier, <i>per seat</i>	+85
Wallsaver rear leg	+65
Ganging bracket (1 per 2 chairs)	+50
Adjustable glides	+50



ADJUSTABLE GLIDES

*\*\*Front adjustment only on wall saver models.*

MODEL NO.	COM/1	2	3	4	5	6	7	8
NTB120-AL	1571	1813	2045	2290	2540	2796	3056	3321

#### NTB120-WA

DESCRIPTION –

Chair, arms



DIMENSIONS –

Width	34.5
Depth	27
Height	35
Seat Width	31
Seat Depth	19.5
Seat Height	19
COM Yard Back	1.75
COM Yard Seat	1.25
Cubic Feet	19
Ship Weight	47

OPTIONS –

Moisture barrier, <i>per seat</i>	+85
Wallsaver rear leg	+65
Ganging bracket (1 per 2 chairs)	+50
Adjustable glides	+50



ADJUSTABLE GLIDES

*\*\*Front adjustment only on wall saver models.*

MODEL NO.	COM/1	2	3	4	5	6	7	8
NTB120-WA	1661	1904	2139	2386	2636	2896	3163	3432

Integrity

## Integrity

### Metal Seating Collection

Different fabrics may be specified on the seat and on the back. In this case, use the higher grade of the two. No additional upcharge applies. All prices are in CA dollars (CAD).

### NT220-WCA

#### DESCRIPTION –

Two-seat, center arm



#### DIMENSIONS –

Width	47.5
Depth	27
Height	35
Seat Width	21
Seat Depth	19.5
Seat Height	19
Arm Height	25.5
COM Yard Back	2
COM Yard Seat	1.5
Cubic Feet	28
Ship Weight	73.5

#### OPTIONS –

Moisture barrier, <i>per seat</i>	+85
Wallsaver rear leg	+98
Adjustable glides	+75



ADJUSTABLE GLIDES

*\*\*Front adjustment only on wall saver models.*

MODEL NO.	COM/1	2	3	4	5	6	7	8
<b>NT220-WCA</b>	2297	2582	2851	3130	3419	3721	4029	4342

### NT330-WCA

#### DESCRIPTION –

Three-seat, center arms



#### DIMENSIONS –

Width	69
Depth	27
Height	35
Seat Width	21
Seat Depth	19.5
Seat Height	19
Arm Height	25.5
COM Yard Back	3
COM Yard Seat	2.25
Cubic Feet	40
Ship Weight	109

#### OPTIONS –

Moisture barrier, <i>per seat</i>	+85
Wallsaver rear leg	+130
Adjustable glides	+100



ADJUSTABLE GLIDES

*\*\*Front adjustment only on wall saver models.*

MODEL NO.	COM/1	2	3	4	5	6	7	8
<b>NT330-WCA</b>	3416	3844	4249	4665	5098	5544	5998	6458

Integrity

## Integrity

Bench Seating Collection

All prices are in CA dollars (CAD).

### NTB-42

DESCRIPTION –

Two-seat Bench



DIMENSIONS –

Width 45  
 Depth 25  
 Seat Width 42  
 Seat Height 18  
 COM Yard 2  
 Cubic Feet 14  
 Ship Weight 42

OPTIONS –

Moisture barrier +80

MODEL NO.	COM/1	2	3	4	5	6	7	8
NTB-42	1606	1779	1943	2111	2287	2466	2648	2835

### NTB-63

DESCRIPTION –

Three-seat Bench



DIMENSIONS –

Width 66  
 Depth 25  
 Seat Width 63  
 Seat Height 18  
 COM Yard 3  
 Cubic Feet 20  
 Ship Weight 60

OPTIONS –

Moisture barrier +120

MODEL NO.	COM/1	2	3	4	5	6	7	8
NTB-63	2215	2472	2713	2965	3223	3489	3761	4037

Integrity

## Integrity

Metal Seating Collection

### NTC-90R

#### DESCRIPTION –

Radius Corner Table

Includes two connecting brackets



#### DIMENSIONS –

Width 26

Depth 26

Cubic Feet 2

Ship Weight 25

#### AVAILABLE IN 12 LAMINATED FINISHES –

Aria, Candlelight, Chestnut, Chocolate,

Dolce Vita, Grenada, Hardrock Maple,

Havana, Palomino, Pebble, Sand,

White Chocolate

#### MODEL NO.

#### PRICE

<b>NTC-90R-P</b>	HPL with PVC edge	CAD \$	750
<b>NTC-90R-S</b>	Corian® Solid Surface	CAD \$	1258

### NTC-90S

#### DESCRIPTION –

Square Corner Table

Includes two connecting brackets



#### DIMENSIONS –

Width 26

Depth 26

Cubic Feet 2

Ship Weight 30

#### AVAILABLE IN 12 LAMINATED FINISHES –

Aria, Candlelight, Chestnut, Chocolate,

Dolce Vita, Grenada, Hardrock Maple,

Havana, Palomino, Pebble, Sand,

White Chocolate

#### MODEL NO.

#### PRICE

<b>NTC-90S-P</b>	HPL with PVC edge	CAD \$	750
<b>NTC-90S-S</b>	Corian® Solid Surface	CAD \$	1258

### NTC-SP

#### DESCRIPTION –

Square Spacer Table

Includes two connecting brackets



#### DIMENSIONS –

Width 18

Depth 18

Cubic Feet 1

Ship Weight 16

#### AVAILABLE IN 12 LAMINATED FINISHES –

Aria, Candlelight, Chestnut, Chocolate,

Dolce Vita, Grenada, Hardrock Maple,

Havana, Palomino, Pebble, Sand,

White Chocolate

#### MODEL NO.

#### PRICE

<b>NTC-SP-P</b>	HPL with PVC edge	CAD \$	595
<b>NTC-SP-S</b>	Corian® Solid Surface	CAD \$	1198

Integrity



## Integrity

Occasional Table Collection

### NTF-1818-16

DESCRIPTION –

Square Table



DIMENSIONS –

Width 18

Depth 18

Height 16

Cubic Feet 2

Ship Weight 24

MODEL NO.			PRICE
NTF-1818-16-P	HPL with 3mm PVC edge	CAD \$	912
NTF-1818-16-S	Corian® Solid Surface	CAD \$	1451

### NTF-20D-16

DESCRIPTION –

Round Table



DIMENSIONS –

Width 20

Depth 20

Height 16

Cubic Feet 2

Ship Weight 24

MODEL NO.			PRICE
NTF-20D-16-P	HPL with 3mm PVC edge	CAD \$	901
NTF-20D-16-S	Corian® Solid Surface	CAD \$	1434

Integrity